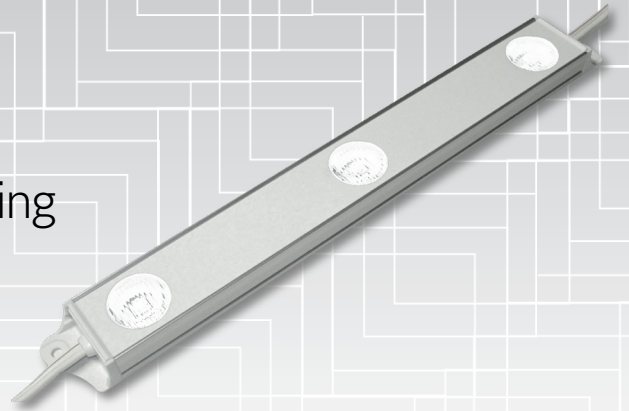







LED Module 250

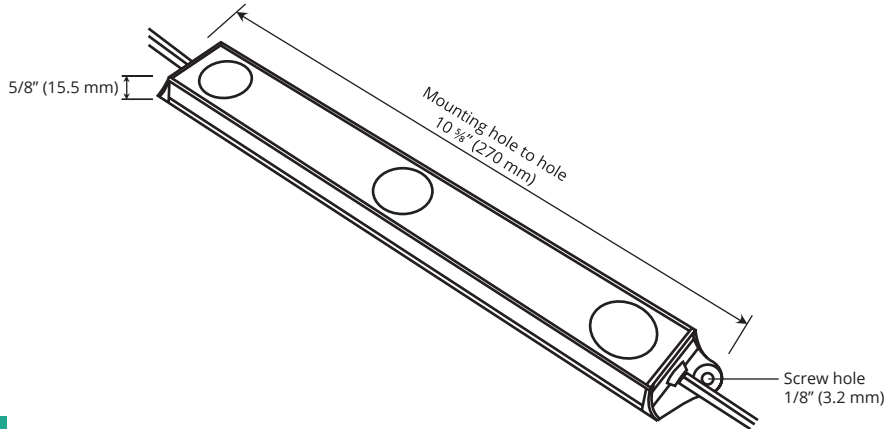
High Output Side Lighting / Backlighting
LED Module



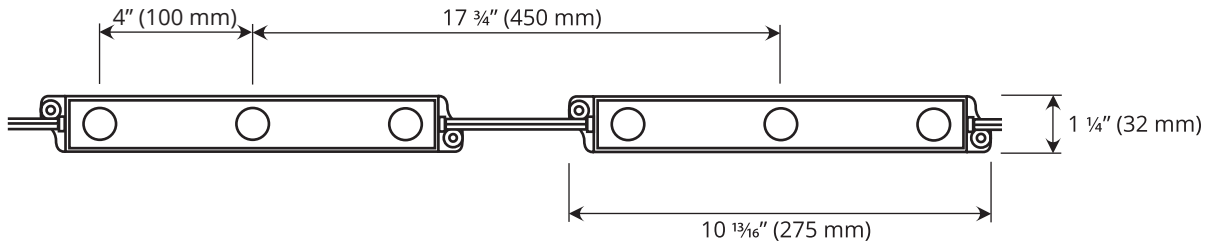
LED Module 255 makes light boxes energy efficient, easily. This LED system works for single and double face light boxes. Features a 10° x 50° narrow beam angle for even lighting output.

FEATURES	
 Outdoor Light Boxes	<ul style="list-style-type: none"> ✓ Narrow beam angle provides uniform light ✓ Great for double sided light boxes ✓ 100% waterproof (IP67) ✓ High brightness (510 lm at 6500 K, 450 lm at 3000 K) ✓ Long LED lifespan (40 000 ~ 50 000 hours) ✓ Easy to install ✓ Energy saving and maintenance free (70% energy savings over traditional lighting) ✓ Superior consistent light quality ✓ Advanced 3-year warranty
 Double-Sided Light Boxes	
 Single-Sided Light Boxes	
 Signage	
	

PROFILE VIEW



FRONT VIEW



SPECIFICATIONS

Electrical

Input Voltage	12 VDC
Power Consumption	8.4 W (max.) / 2.8 W per LED
Operating Current	0.7A (max.)
Certification	UL recognized component (E258512)

Physical

Color Temperature	Approx. 6500 K
Mounting	Holes for screw mounting
Operating Temperature	-20 °C (-4 °F) to +70 °C (+158 °F)
Environment	Wet and dry locations
Dimensions	10 13/16" (275 mm) L x 1 1/4" (32 mm) W x 5/8" (15.5 mm) H
Beam Angle	10° x 50° (elliptical)

ORDER INFORMATION

Series #	Color Temperature
LLM12-L-250	6500 K

- Notes:
- LED Kelvin temperatures listed in this literature have been derived from raw LED data. Actual Kelvin ratings can vary +/- 200 K based upon environmental conditions including but not limited to inclusion into LGPs and the use of diffusion materials. A precise ANSI bin control system is utilized to help maintain LED conformity and to minimize variances
 - DLC strives to maintain tight control over specification factors. However, specifications are subject to change on rare occasion. These changes may not be reflected here