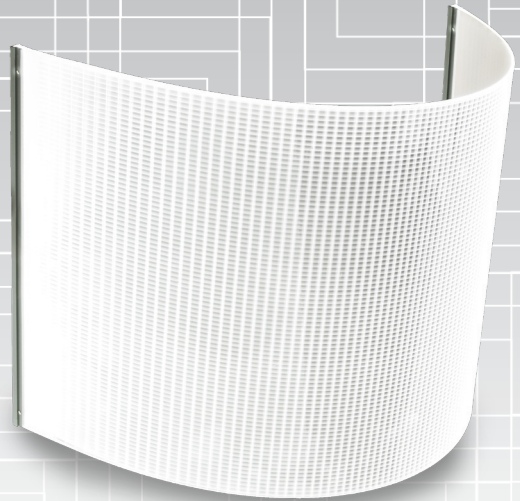



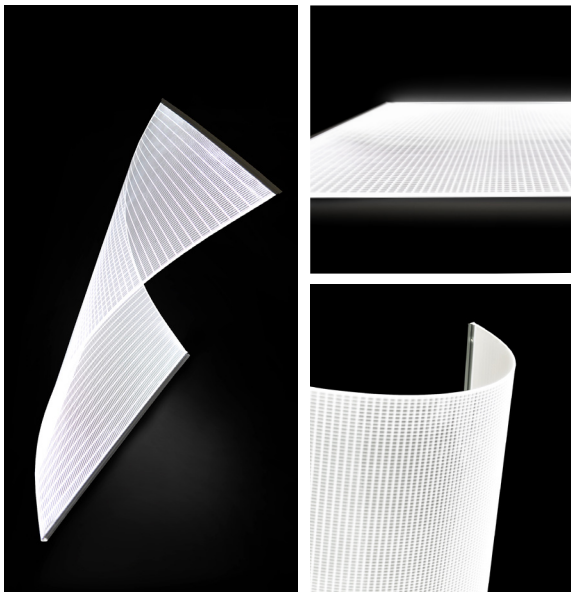



# LumiFlex

2 mm LED Light Panel

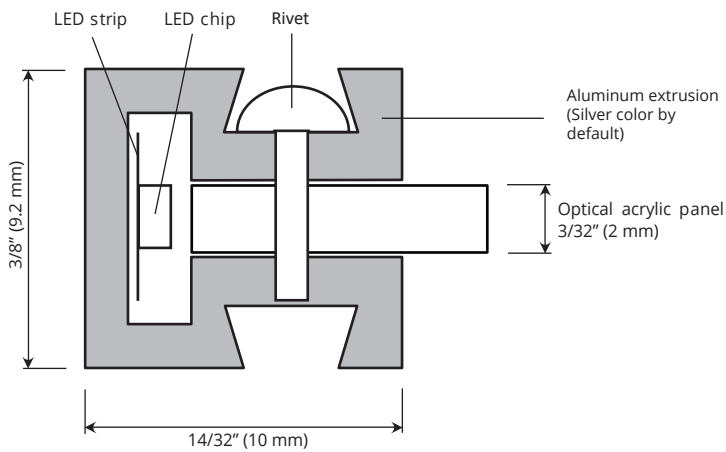


The unmatched light quality of LumiSheet, in a flexible, lightweight, and easy to manipulate LED light panel. The panel is only 3/32" (2 mm) thick, with a 3/8" (9.2 mm) aluminum extrusion. LumiFlex is so thin, it can curve to fit the architecture of a space. Its low weight and thickness makes shipping and installation a breeze. Plus, LumiFlex provides the bright, even, lasting light you'd expect from the LumiSheet name.

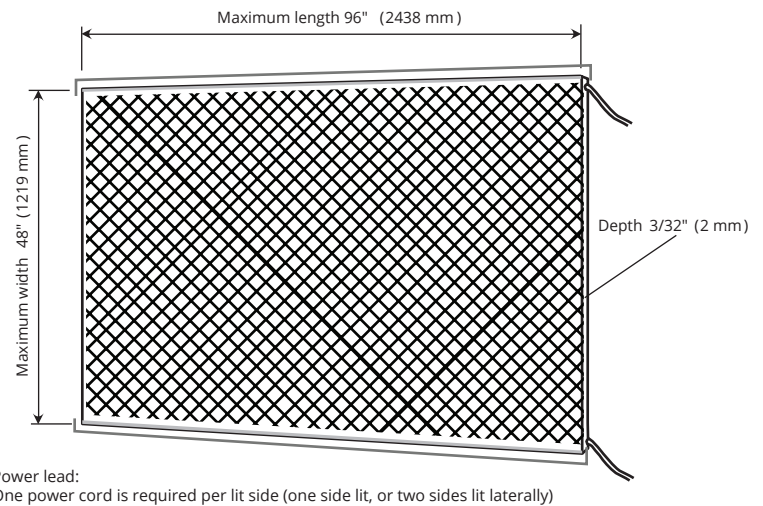
FEATURES

 3D Curves	<ul style="list-style-type: none"> <li>✓ Cost effective</li> <li>✓ Flexible, with the ability to curve</li> <li>✓ Lightweight</li> <li>✓ Available in custom sizes</li> <li>✓ High brightness (up to 10 000 lux)</li> <li>✓ Long LED lifespan (70 000+ hours)</li> <li>✓ Energy saving and maintenance free (70% energy savings over traditional lighting)</li> <li>✓ Superior consistent light quality</li> <li>✓ Advanced 3-year warranty</li> </ul>	
 Lit Walls		
 Backlit Graphics		
 Lit Fixturing		

## PROFILE VIEW



## FRONT VIEW



## SPECIFICATIONS

## Electrical

<b>Input Voltage</b>	24 VDC
<b>Power Consumption</b>	5.2 W/ft (standard)
<b>Wire Size</b>	20 AWG 2 wire
<b>Wiring</b>	One power cord is required per lit side with up to 2 lateral lit sides per panel. Each panel must have direct connection to power supply. Do not wire panels in series
<b>Connector</b>	2.1 / 5.5 mm barrel plug Standard 5' (1500 mm), optional 10' (3000 mm), custom
<b>Certification</b>	UL recognized component (E362079)

## Physical

<b>Color Temperature</b>	2700 K <span style="color: #e67e22;">■</span>	3000 K <span style="color: #f1c40f;">■</span>	4100 K <span style="color: #a9d0d9;">■</span>	5300 K <span style="color: #a9d0d9;">■</span>	6500 K <span style="color: #a9d0d9;">■</span>
<b>CRI</b>	90				
<b>Mounting</b>	Mounted with edge clips / standoffs				
<b>Operating Temperature</b>	-30 °C (-22 °F) ~ +40 °C (+104 °F)				
<b>Environment</b>	Dry location only (indoor)				
<b>Thickness</b>	Panel: 3/32" (2 mm) Extrusion: 3/8" (9.2 mm)				
<b>Minimum Size</b>	2 1/2" (63.5 mm) L x 2" (50 mm) W				
<b>Maximum Size</b>	96" (2438 mm) L x 48" (1219 mm) W				
<b>Weight</b>	0.5 lbs / sq ft (0.23 kg / sq m)				

## ORDER INFORMATION

Series #	Size	Color Temperature	Illuminated Face Option	Cable Length	LED Location
LLX24- 2 mm depth 24 V	Length x Width (inch / mm)	2700 K (± 200 K) 5000 K (± 200 K) 6500 K (± 200 K)	SFI: Single Face DFI: Double Face	WL15: 5' (1500 mm) power cord with 2.1 / 5.5 mm barrel plug  WL30: 10' (3000 mm) power cord with 2.1 / 5.5 mm barrel plug	L1: LEDs along 1 long edge L2: LEDs along 2 long edges S1: LEDs along 1 short edge S2: LEDs along 2 short edges